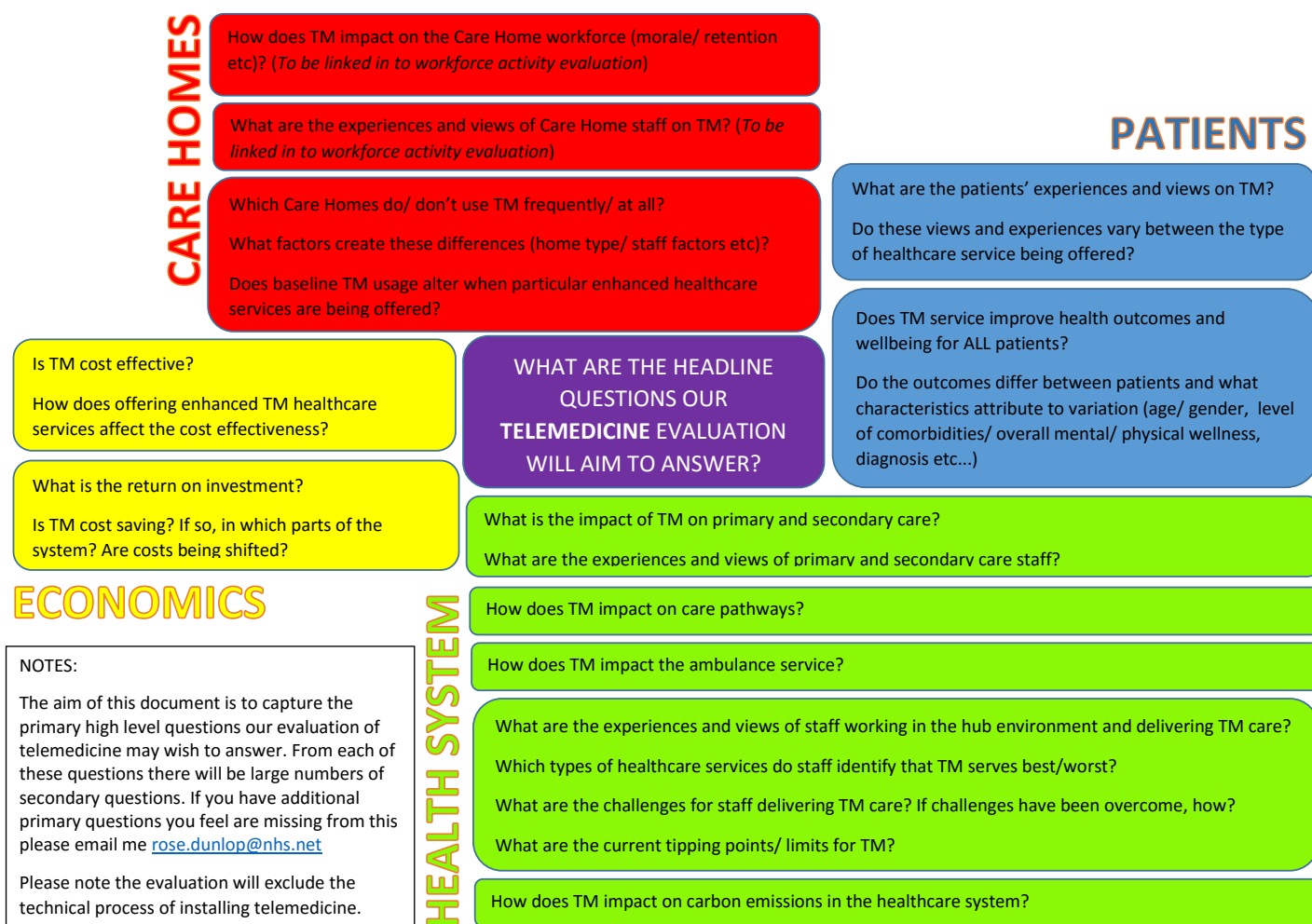


Working together to enhance health in care homes

Initial findings poised to be shared soon

We will soon be in a position to share with you initial data which captures – and allows us to quantify for the first time - some of the early progress and financial savings our vanguard is already beginning to make. Over and above our core evaluation criteria, such as reducing Emergency Department attendances and driving down the number of inappropriate or unnecessary GP call-outs to care homes, we want your help in shaping other areas to measure.



We are finalising our approach for ensuring our vanguard can quantify, through access to timely data, the activity shift across the full cohort of our care home residents, including:

- Reduction in unnecessary ED attends
- Reduction in avoidable NEL admissions
- Reduction in inappropriate or unnecessary GP call outs in-hours to care homes
- Reduction in inappropriate or unnecessary GP call outs out-of-hours to care homes
- Reduction in blue light transfers

This insight will play a key role in future commissioning plans.

Building on this core work, our research and evaluation lead, Rose Dunlop, has developed this visual, which also sets out other areas that our vanguard has the potential to influence – and measure.

She would like your feedback on this draft and suggestions for other potential areas of evaluation that the vanguard can carry out that would help you.

Please send your comments to rose.dunlop@nhs.net. Thank you. ■